



PLASTIC LATTICE

PAINTABLE PLASTIC LATTICE

TRIM MOULDING



- Versatile and durable for both indoor and outdoor use
- Easy to install with standard tools
- Virtually maintenance-free
- UV-stabilized/fade-resistant

[DimensionsDIY.com](http://DimensionsDIY.com)

**LIFETIME** | LIMITED WARRANTY



## Choose the lattice that fits your style.

### Interior decorating

Get creative with decorative screens or enhance furniture and cabinetry.

### Skirting and covers

Enhance your deck, porch, patio, stair railing, screen door, mobile home or beam foundation.

### Garden accents

Spruce up flower bed edging, planter boxes, garden boundary fencing or add shade.

### Outdoor living spaces

Create an outdoor retreat with a plastic lattice trellis, arbor, gazebo or pergola.

### Enclosures

Protect pets or hide unsightly areas, such as air conditioners or trash receptacles.

For decades, lattice has been used primarily as an attractive skirt around porches and decks. But over the last several years, builders, architects and homeowners have discovered its amazing versatility.

With the look of real wood, Dimensions plastic lattice is UV-stabilized, so it resists fading in the sun, and is virtually maintenance-free,

only needing periodic rinsing to remove surface dirt. Best of all, all sizes and styles are backed by our Lifetime Limited Warranty.

Durable and sturdy, Dimensions plastic lattice won't rot, split or peel. But Dimensions takes it even a step farther, providing more options and versatility than the rest. How will you use lattice to enhance your home and garden?



#### CLASSIC DIAMOND

- 2.85" opening
- Timeless design
- 4' x 8' available in all 12 colors\* as well as paintable
- 2' x 8' available in white only



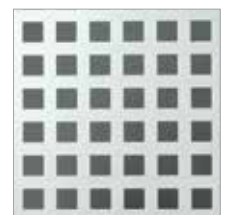
#### ULTRA LIGHT CLASSIC DIAMOND

- 2.85" opening
- Light and economical
- 4' x 8' available in all 12 colors\*
- 2' x 8' available in white only



#### PRIVACY DIAMOND

- 1.11" opening
- Increases privacy
- 4' x 8' available in all 12 colors\* as well as paintable



#### PRIVACY SQUARE

- 1.75" opening
- Offers extra privacy and a modern design
- 4' x 8' available in white, black and paintable

\*excluding black







Black Privacy Square

## Create a finished look.

Easy-to-install caps and divider trim moulding enhances the appearance of installed panels. Caps create an attractive frame around the outer edge and dividers hide the joints between panels.



### CAP AND DIVIDER MOULDING

- 97" lengths
- Available in all colors for an exact color-match with lattice panels.
- Also available in paintable



CAP



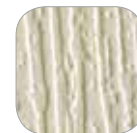
DIVIDER



LATTICE SCREWS



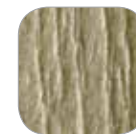
White



Almond



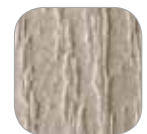
Brownstone



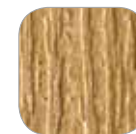
Khaki



Gray



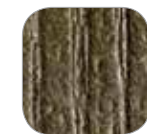
Clay



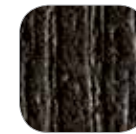
Cedar



Redwood



Dark Brown



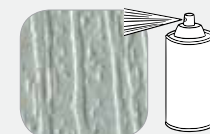
Black



Light Green



Dark Green



**NEW!** Paintable

Looking for a custom color? Choose paintable lattice! It's ready to prime and paint with the aerosol paint for plastic of your choice—for a look you'll love.



NOTE: The colors represented here are reproduced with printers' inks and may vary from actual products. For actual product colors, please visit your local Dimensions dealer.





Driftwood Gray Privacy Diamond



White Privacy Diamond



Black Classic Diamond

## Add dimension to your space.

Check out our Dimensions Pinterest page for inspiration and creative ideas on how to use lattice for an endless number of indoor and outdoor projects.



Clay Classic Diamond



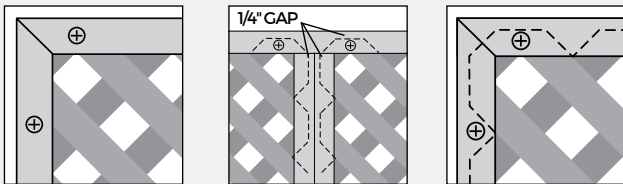
White Privacy Square



Paintable Classic Diamond

### Installation Tips

Dimensions plastic lattice can be cut and drilled using standard tools. Use rustproof or rust-resistant fasteners to maintain the beauty of your project over time. For a distinguished look, frame panels with plastic caps and connect panels with plastic dividers. Always allow a 1/4" gap between the lattice edge and moulding for the panel to expand and contract with temperature changes. Lattice must be attached to a self-supporting structure or frame. Suspend lattice from top row of fasteners.



- Along the top, use a 1/4" drill bit to predrill oversized holes every two feet through both the moulding and lattice. Fasten with screws, taking care not to over-tighten. Along the sides and bottom, predrill oversized holes every two feet through the moulding only and fasten with screws. Again, be careful not to over-tighten the screws.
- Do not install lattice in a horizontal application. Without proper support, lattice will be prone to sagging, rippling and heat retention.
- Standard Dimensions lattice is a nonporous material. Coatings such as paint and stain do not adhere well to the surface.

### Paintable Lattice Painting Tips

- Clean the surface of the paintable plastic lattice sheet with a solution of warm water and dish soap. Rinse and allow to dry.
- Apply two thick coats of an aerosol primer for plastic\* over the entire surface, as instructed on the can. Allow to dry between coats.
- Once dry, apply a thin coat of any aerosol paint over the entire surface, per product directions. Allow to dry as directed. Apply a second coat of aerosol paint over entire lattice sheet. Allow to dry as directed.

\* Paint for Plastic can be used without primer per product instructions.

### Lifetime Limited Warranty

- Universal Consumer Products, Inc. offers an express limited warranty for Dimensions plastic lattice at [DimensionsDIY.com](http://DimensionsDIY.com).



2801 East Beltline NE • Grand Rapids, MI 49525 • 800.556.8449 • [DimensionsDIY.com](http://DimensionsDIY.com)  
 Dimensions is a trademark of Universal Consumer Products Inc, in the U.S.  
 ©2016 Universal Forest Products, Inc. All rights reserved. 8841\_6/16